



TEXTILENE®
BRAND FABRIC
nano™ 95

TEXTILENE®
BRAND FABRIC
nano™ 97



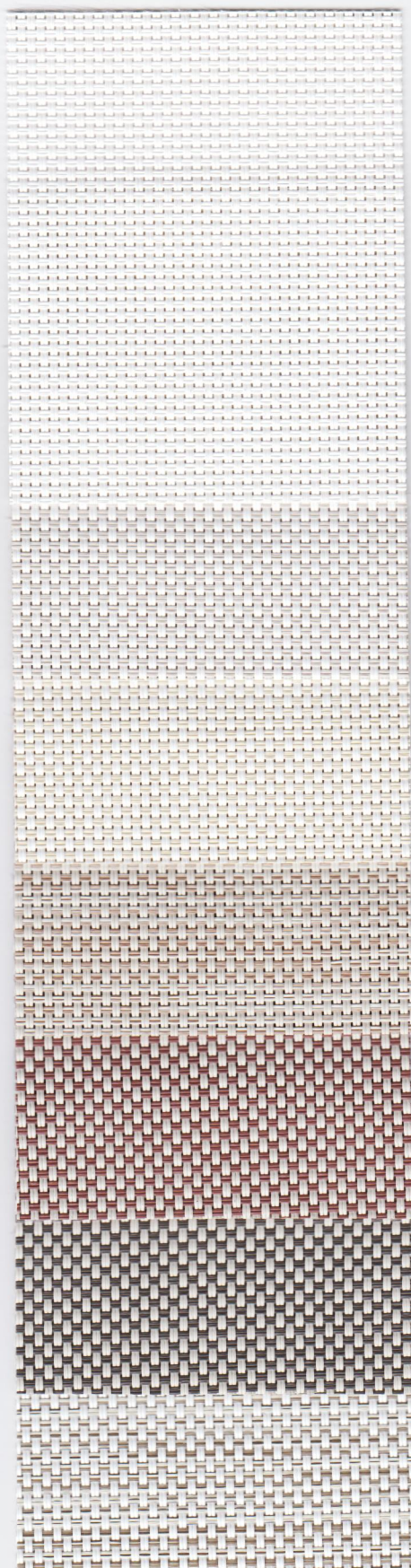
T18FVS026
Flat Black



T18F4S002
Flat Black

TEXTILENE® nano™ 95 and 97 are durable, yet lightweight synthetic fabrics. Lighter and finer than the original TEXTILENE®, but with the same technical qualities. TEXTILENE® nano™ 95 and 97 are excellent for both exterior and interior use. These fabrics are flame resistant, fade resistant, and can reduce energy costs while blocking up to 95 or 97% of the sun's harmful rays.

***Custom colors and widths available. Minimum order of 1000 yds. Upcharges may apply. ** Available in 33.3 yld rolls.**



White
 nano™ 95
 T18FVS025 x 126"
 nano™ 97
 T18F4S003 x 126"

Bone
 nano™ 95
 T18FVT057 x 126"
 nano™ 97
 T18F4T009 x 126"

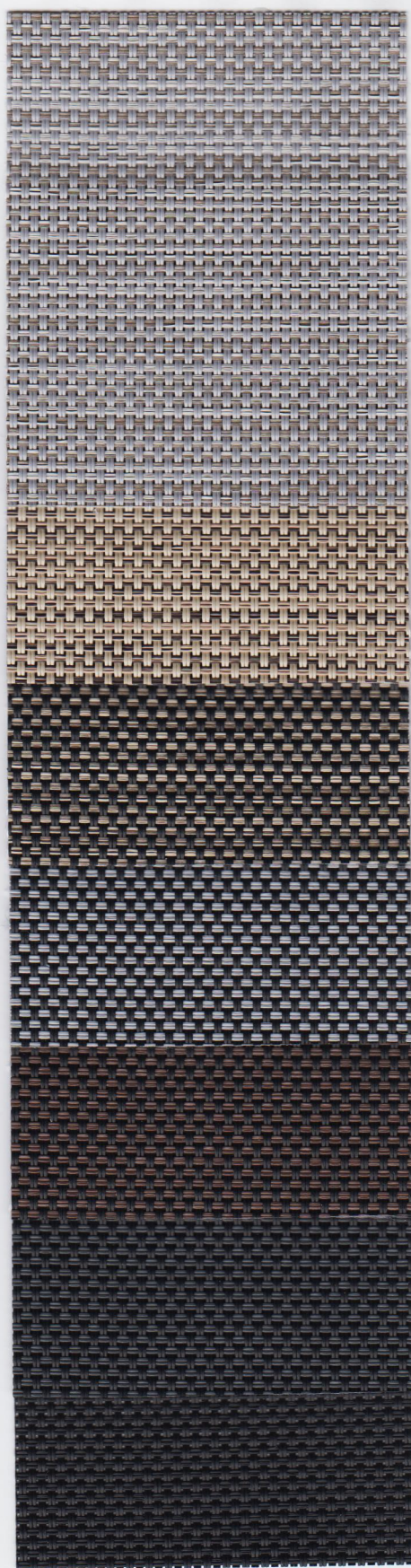
Sable
 nano™ 95
 T18FVT056 x 126"
 nano™ 97
 T18F4T010 x 126"

Desert Sand
 nano™ 95
 T18FVT068 x 126"
 nano™ 97
 T18F4T018 x 126"

Almond
 nano™ 95
 T18FVT067 x 126"
 nano™ 97
 T18F4T017 x 126"

Café
 nano™ 95
 T18FVT070 x 126"
 nano™ 97
 T18F4T020 x 126"

Stone Texture
 nano™ 95
 T18FVT058 x 126"
 nano™ 97
 T18F4T011 x 126"



Shadow Texture
 nano™ 95
 T18FVT055 x 126"
 nano™ 97
 T18F4T012 x 126"

Tumbleweed
 nano™ 95
 T18FVT069 x 126"
 nano™ 97
 T18F4T019 x 126"

Espresso Texture
 nano™ 95
 T18FVT061 x 126"
 nano™ 97
 T18F4T006 x 126"

Granite
 nano™ 95
 T18FVT059 x 126"
 nano™ 97
 T18F4T005 x 126"

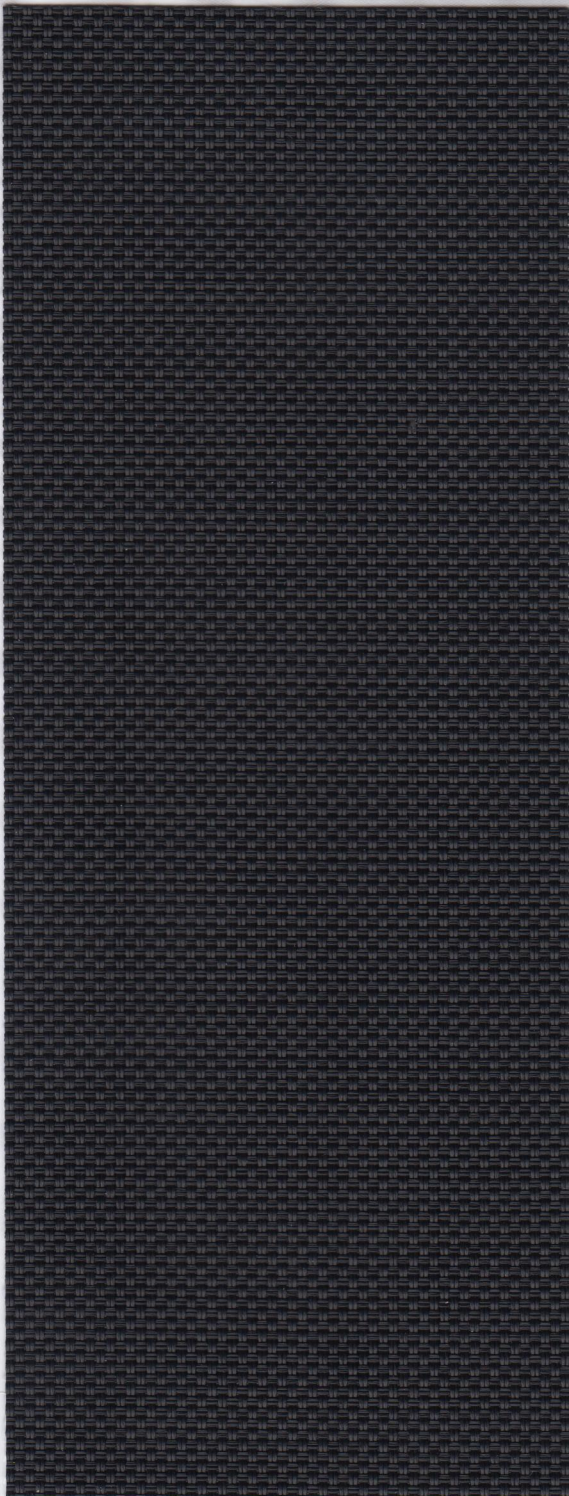
Tobacco
 nano™ 95
 T18FVT054 x 126"
 nano™ 97
 T18F4T007 x 126"

Charcoal
 nano™ 95
 T18FVT060 x 126"
 nano™ 97
 T18F4T008 x 126"

Flat Black
 nano™ 95
 T18FVS026 x 126"
 nano™ 97
 T18F4S002 x 126"

TEXTILENE[®]
BRAND FABRIC
nano™ 97

TEXTILENE[®]
BRAND FABRIC
nano™ 95



T18F4S002
Flat Black



T18FVS026
Flat Black

Specifications

REACH Compliant - Regulated by Registration, Evaluation, Authorization and Restriction of Chemicals. REACH places greater responsibility on industry to manage the risks that chemicals may pose to human health and the environment.

Children's Toy Act - Does not contain harmful phthalates listed under Section 108 of the Consumer Product Safety Improvement Act of 2008 (CPSIA).

Fire Classification - Passes California U.S. Title 19 (small scale), NFPA701-2015 TM#1 (small scale), NFPA 101 (Class A Rating), UBC (Class 1), BS 5867 2008 Part 2 Type B Performance, and CAN/ULC-S 109-03 (large and small scale).

Environmental Certification - GREENGUARD gold certified. Acceptable for use in environments such as schools and healthcare facilities. Complies with requirements of the State of California's Department of Public Health "Standard Method for Testing and Evaluation of Volatile Organic Chemical Emissions from Indoor Sources Using Environmental Chambers, Version 1.1 (2010)" (also known as California Section 01350).

RoHS Compliant - Free of Lead (Pb), Cadmium (Cd), Mercury (Hg), Hexavalent chromium (Hex-Cr), Polybrominated biphenyls (PBB), and Polybrominated diphenyl ethers (PBDE).

Bacteria and Fungal Resistance - Passes ASTM E 2180, ASTM G21. Includes specially formulated antimicrobial.



REACH COMPLIANCE



FLAME RESISTANT



GREENGUARD GOLD



LEAD FREE



PRINTABLE



RoHS COMPLIANT



MADE IN USA



LIMITED WARRANTY

Technical Data

Item Number: Nano™ 95 - T18FVS, T18FVT | Nano™ 97 - T18F4S, T18F4T

Product Description: Woven fabrics using .014" diameter vinyl coated 420 denier polyester core yarns woven in the warp and fill.

Attribute	ASTM	Warp		Fill		Typical	
		nano™ 95	nano™ 97	nano™ 95	nano™ 97	nano™ 95	nano™ 97
Construction, end/inch	D3775-17	36.0 ±0.5	38 ±0.5	34.0 ±0.5	40.0 ±0.5		
Weight, oz/yd ²	D3776-09					14.7	16.2
Weight, g/m ²	D3776-09					498.5	549.3
Tensile Strength (grab), lbf / daN	D5034-09	423.6 / 192.1	414.3 / 184.3	382.2 / 173.4	409.2 / 182.0		
Tensile Strength (strip), lbf / daN	D5035-11	218.5 / 99.1	220.6 / 98.1	188.4 / 85.5	249.3 / 110.9		
Tear Strength (trapezoidal), lbf / daN	D1117-99	58.4 / 26.5	40.1 / 17.8	42.2 / 19.1	37.4 / 16.6		
Elongation, %	D5035-11	12.7	11.1	11.6	12.5		
Abrasion Resistance <small>(CS10/500 cycles/ with no added weight)</small>	D3884-09	No Exposure of Core Yarn					
Flammability Rating		CA Title 19 & NFPA 701					
Weatherability, 1200 hours	G154-16	No Discoloration					
Mildew Resistance	G21-13	Pass					
Thickness, inches / mm	D1777-15					0.026 / 0.66	0.0275 / 0.699

The above results are a representation of real data from single test samples. Presently no specification is incorporated.

Style	Total Solar			Visible			Insulating Glass			Insulating Glass		
	Ts	Rs	As	Ts	Rs	As	1/2" Clr.	1" Clr.	1" HA	1/2" Clr.	1" Clr.	1" HA
nano™ 95												
Flat Black <small>Profile Angle 0°</small>	8	4	88	8	4	88	0.26	0.21	0.16	0.20	0.13	0.11
Flat Black <small>Profile Angle 45°</small>	5	8	87	6	9	85	0.15	0.15	0.15	0.11	0.11	0.11
nano™ 97												
Flat Black <small>Profile Angle 0°</small>	2	4	94	2	4	94	0.22	0.17	0.12	0.16	0.10	0.09
Flat Black <small>Profile Angle 45°</small>	1	2	97	1	2	97	0.12	0.12	0.12	0.09	0.09	0.09